

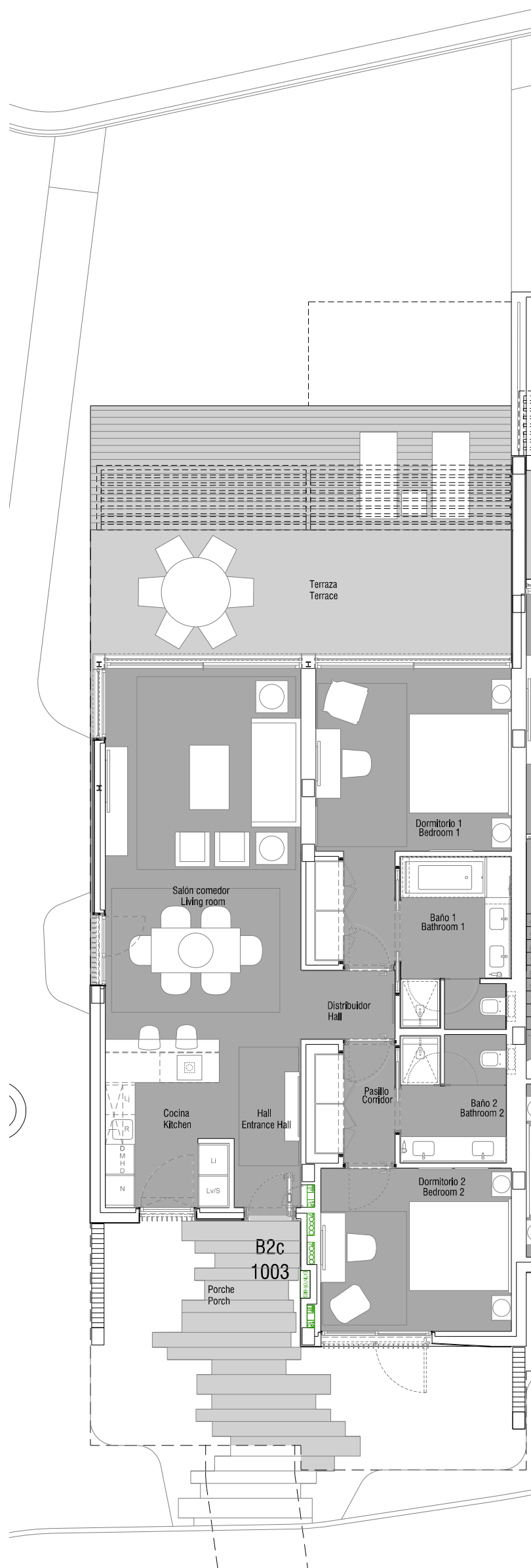
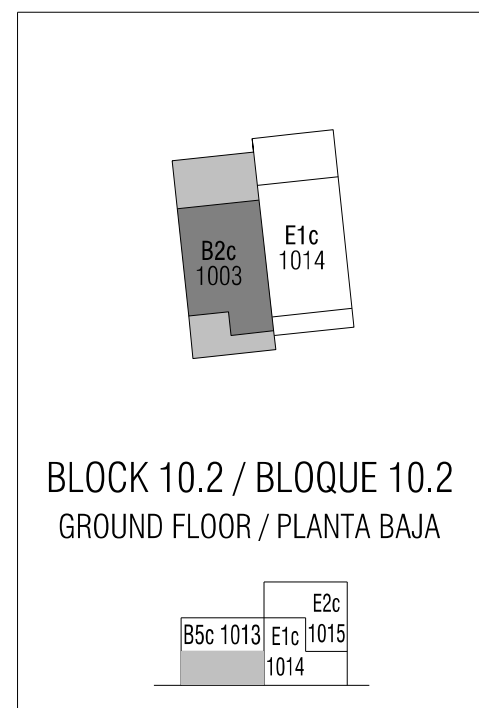
APT. 1003

B2c

ground floor/planta baja

2 BEDROOMS/ 2 DORMITORIOS

BUILT AREA/SUPERFICIE CONSTRUIDA: 136,55 m²



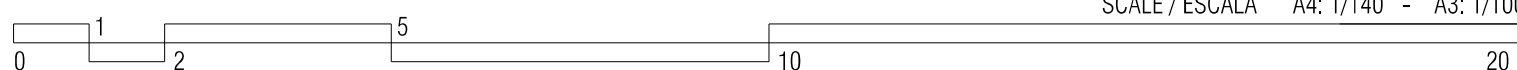
INDOOR USABLE AREA/SUPERFICIE UTIL INTERIOR: 93,30 m²

living room: /salón-comedor:	32,70 m ²
kitchen: /cocina:	8,20 m ²
bedroom 1: /dormitorio 1:	18,20 m ²
bedroom 2: /dormitorio 2:	12,70 m ²
bathroom 1:/baño 1:	7,60 m ²
bathroom 2:/baño 2:	5,50 m ²
entrance hall:/hall:	1,90 m ²
corridor:/pasillo:	3,80 m ²
hall:/distribuidor:	2,70 m ²

TERRACES/TERRAZA TOTAL: 50,80 m²

PRIVATIVE GARDEN :/JARDIN PRIVATIVO: 51,50 m²

* Proyecto en fase de redacción sujeto a modificaciones / * Project and plans in draft phase and subject to change



SCALE / ESCALA A4: 1/140 - A3: 1/100