

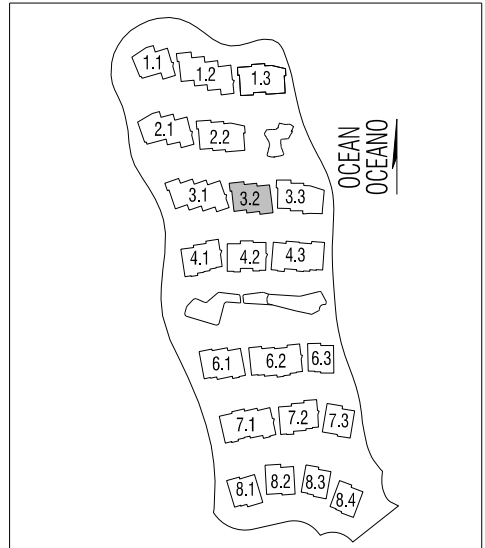
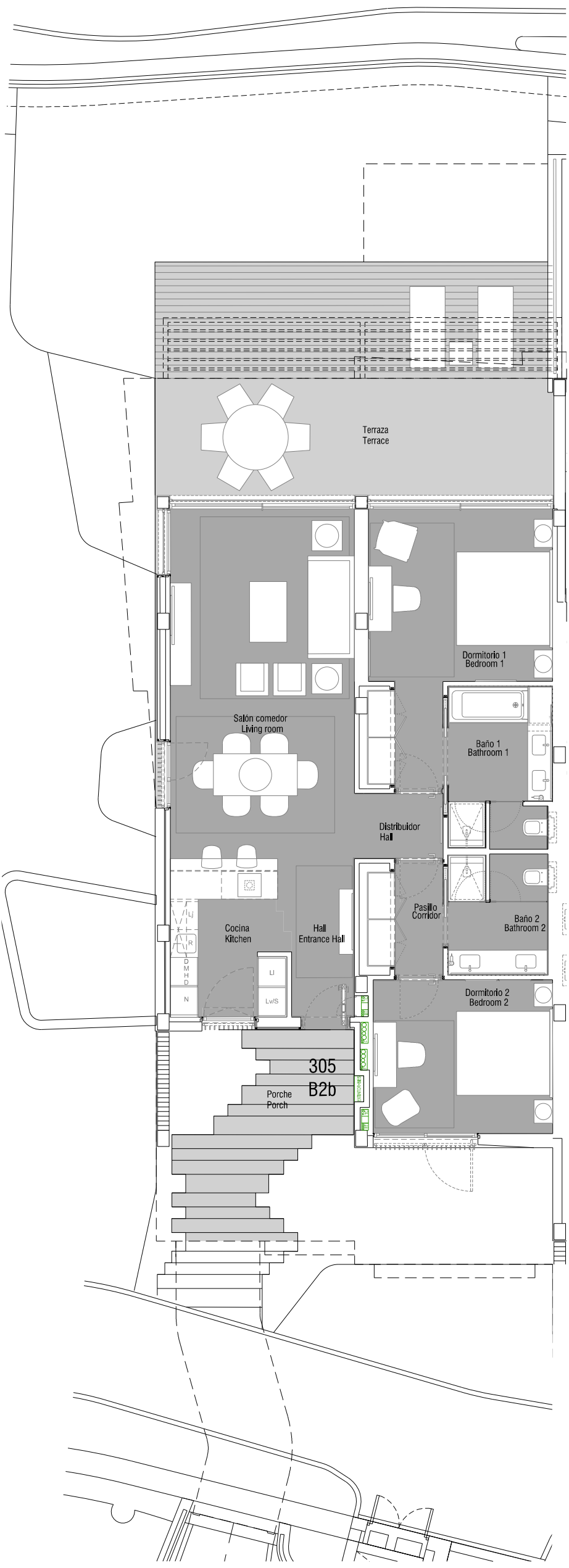
APT. 305

B2b

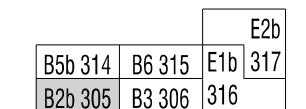
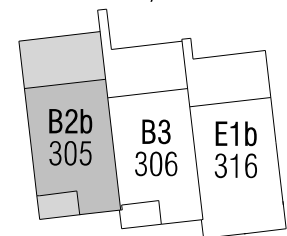
ground floor / planta baja

2 BEDROOMS / 2 DORMITORIOS

BUILT AREA / SUPERFICIE CONSTRUIDA: 138,15 m²



BLOCK 3.2 / BLOQUE 3.2
GROUND FLOOR / PLANTA BAJA



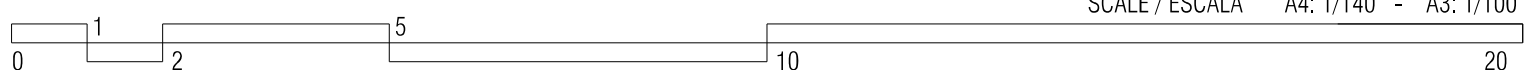
INDOOR USABLE AREA / SUPERFICIE UTIL INTERIOR: 93,30 m²

living room / salón-comedor:	32,70 m ²
kitchen / cocina:	8,20 m ²
bedroom 1/ dormitorio 1:	18,20 m ²
bedroom 2/ dormitorio 2:	12,70 m ²
bathroom 1 / baño 1:	7,60 m ²
bathroom 2 / baño 2:	5,50 m ²
entrance hall / hall:	1,90 m ²
corridor / pasillo:	3,80 m ²
hall / distribuidor:	2,70 m ²

TERRACES / TERRAZA TOTAL: 52,50 m²

PRIVATIVE GARDEN / JARDIN PRIVATIVO : 43,70 m²

* Project and plans in draft phase and subject to change / * Proyecto en fase de redacción sujeto a modificaciones



SCALE / ESCALA A4: 1/140 - A3: 1/100